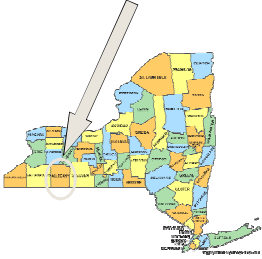


Nurturing Livable Communities

Allegany County Community Partnership on Aging

Allegany County

- Rural
- The size of the state of Rhode Island
- 50,000 people
- 9,121 people over 60
- 33,700 cows
- 17 Traffic Lights
- Poorest county in NYS
- Rural



Community Partnership on Aging

- RWJ grant in 2004

Allegany / Western Steuben Rural Health Network
Allegany County Office for the Aging
Allegany County Health Department
Allegany County Department of Social Services

Vision
To collaboratively inspire vitality and independence for Allegany County's older residents

Community Partnership on Aging

- Absolute Care of Houghton
- ACCORD Corp.
- Alfred Housing Committee
- Alfred State College
- Alfred University
- Allegany Arc
- ACSA
- Allegany County Board of Legislators
- Allegany Blind Association
- Allegany County Cancer Services
- Allegany County Chamber of Commerce
- Community Services (mental health)
- Allegany County DSS
- Allegany County DOH
- Allegany County OEA
- Allegany County Economic Development
- Allegany County Rehab Associates
- Allegany Senior Foundation
- Allegany County United Way
- Allegany/Western Steuben Rural Health Network
- Alzheimer's Assoc. of WNY
- Catholic Charities of WNY
- Cornell Cooperative Extension
- Cuba Memorial Hospital
- Directions in Independent Living
- Highland Day Services
- Highland Healthcare Center
- Homocare & Hospice
- Jan & Bev's Homocare
- Jones Memorial Hospital
- Manor Hills Adult Care
- NYConnects - Allegany County
- NYSDOH Nursing Home Transition and Diversion Program
- Rural Adult Living
- Southern Tier Home Health Services
- St. James Mercy Health
- Veteran's Services
- Visiting Nurses Association
- Wellville Manor Care Center
- WILLCARE

Community Partnership on Aging

- Access to Services
 - LTCC
- Improved Communication
 - Monthly Meetings
 - Electronic Communication Outlet
- Wellness and Prevention Services
 - Growing Stronger
 - Direct Care Workers Recruitment, Retention and Training
 - Sharing Your Wishes
 - Powerful Tools for Caregivers
 - Institutional Culture Change



Nurturing Our Livable Communities

- Two pronged approach:
 - Institutional Culture Change
- Aging in Place Community Strategies



Strategic Planning Goals

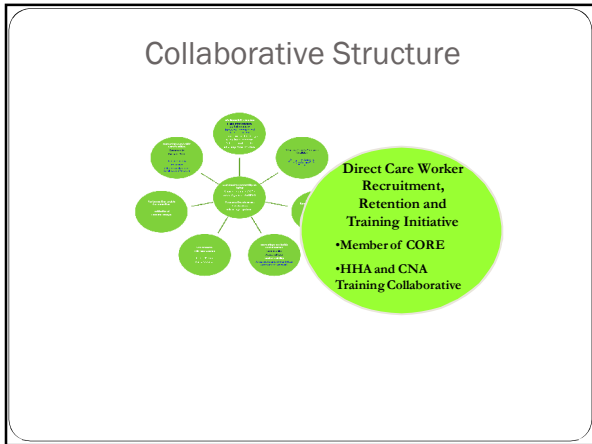
- Mobilizing our efforts to improve quality of life and care for older adults residing in Allegany County;
- Identify gaps in services to be proactive in strengthening the aging service deliver system;
- Strengthening our coalition to meet the diverse needs of our communities;
- Leveraging public and private resources to generate change in practice and in policy;
- Ensuring that community members have a voice in the decision-making process and are viewed as equal partners in our efforts;
- Researching and instituting evidence-based interventions and strategies that are culturally sensitive and relevant to community priorities; and
- Promoting transparency through evaluation and quality improvement strategies to share outcomes and lessons learned.

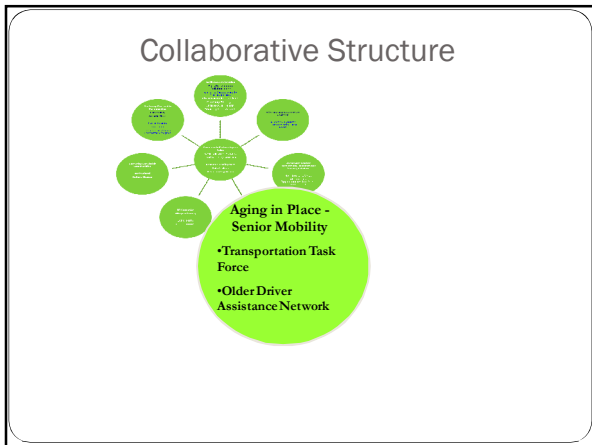
Strategic Planning Process

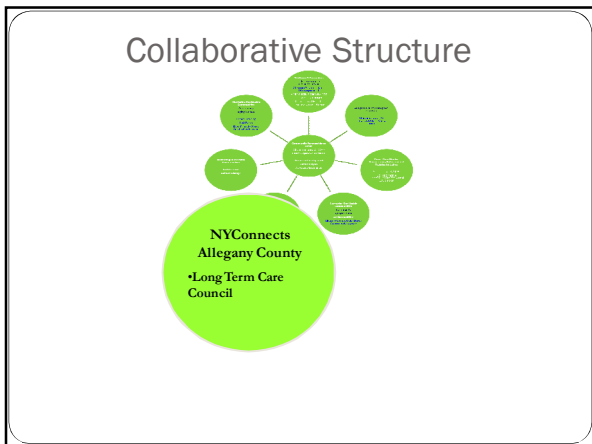
- Needs Assessment Complete- April 2009
 - Asset Mapping of Current Delivery System
 - Quantitative Data Analysis
 - Health Indicators
 - Economic Status
 - Demographic Profile
 - Utilization Data / Agency Reports
 - Qualitative Data Analysis
 - Community Survey
 - Focus Groups
 - Prioritization Exercise
- 5th Annual Aging Conference- May 2009

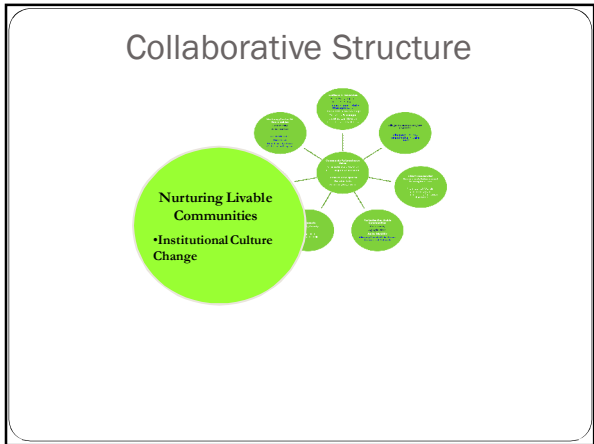
Defined Priorities “Critical Issues”

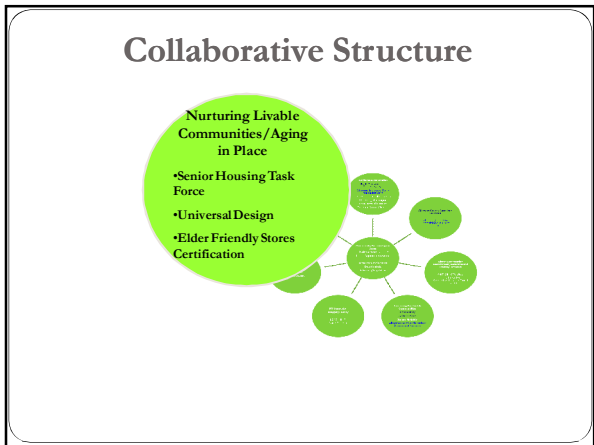
- I. Access and Navigation of Community Resources and Services
- II. Senior Mobility
- III. Affordable Quality Healthcare
- IV. Direct Care Workforce Investment
- V. Universal Design, Home Repair and Modification
- VI. Maintaining Health and Wellness
- VII. Caregiver Supports
- VIII. Environmental Strategies

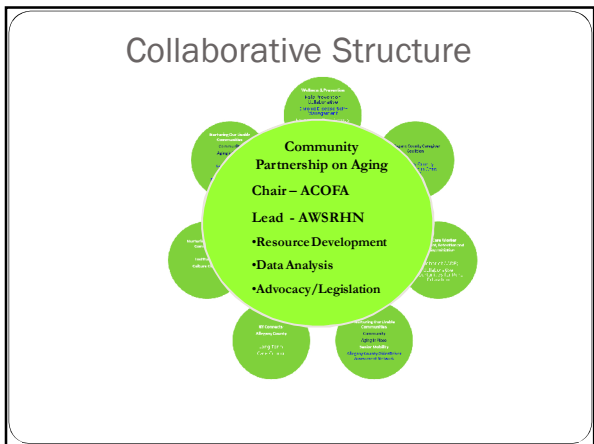












Next Steps

- Support efforts of member agencies to secure resources and grant funding in their pursuit of assisting older adults and caregivers
- Serve as an umbrella organization to apply and secure funding that is relevant to the Goals and Objectives of CPA
- Promote collaborative agency programs, activities and services with limited regard to territorialism, but rather emphasis on person-centered care and personal choice
- Identify and support best-practice models to address Critical Issues
- Share resources; including personnel, volunteer services, applicable funds, data and expertise to address Critical Issues

Contact Information

Kim Toot, Director
 Allegany County Office for the Aging
 Court Street
 Belmont, New York 14813
 585-269-9390
tootk@alleganyco.com

Helen Evans, Program Director
 Allegany / Western Steuben Rural Health Network, Inc.
 85 North Main Street, Suite 4
 Wellsville, New York 14895
 585-593-5223, ext. 11
evansh@awsrhn.org

Contact Information

Larry Kaminski, Mobility Management Planner
 Allegany / Western Steuben Rural Health Network
 85 North Main Street, Suite 4
 Wellsville, New York 14895
 585-593-5223, ext. 16
kaminskil@awsrhn.org

Kate O'Stricker,
 Cornell University Cooperative Extension
 28 Parkside Dr
 Ellicottville, NY 14731-9707
 716-699-2377, ext. 122
kmo11@cornell.edu
